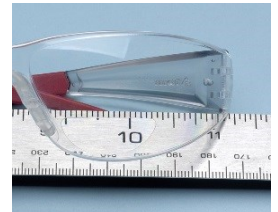


## RX-401™

Now, Ballistic Rated and New Improved Temple Tips for a Better Fit, Comfort and Performance! Weighing only 0.9 oz. (25 g).



## RX-401™

Superior Wearability &  
Lightweight! 7x ANSI Z87+  
Energy.

### Product Features:

- New and improved temple tips for a more comfortable and secure fit.
- Soft, rubber nose bridge makes wearing the glasses a breeze for long periods. Weighing only 0.9 oz. (25 g).
- Great field of vision, molded one-piece unitary lens design.
- Superior wearability, stylish lightweight frame with straight rubber tipped temples.
- Ballistic V<sub>0</sub> rated\* for superior impact protection. (4x Z87+ impact velocity)
- Available in 5 diopter strengths. +1.0, +1.5, +2.0, +2.5, +3.0

\*Tested to US Military Standard MIL-PRF-31013 Impact Test.

## Other Key Product Features

- Lens available in Clear and Grey.
- Polycarbonate lenses absorbs 99.99% of harmful UV A, B and C, 180-380nm.
- Meets ANSI Z87.1-2010+, CE EN-166.

### RX-401™ Ballistic Rating

7x ANSI Z87+ Energy  
4x Z87+ Impact Velocity



Ballistic vs. ANSI

## Ordering Information

Product No.	Product Description
RX-401-1.0	Clear HC/PC lens, +1.0, Grey Temples/Black Tips
RX-401-1.5	Clear HC/PC lens, +1.5, Grey Temples/Black Tips
RX-401-2.0	Clear HC/PC lens, +2.0, Grey Temples/Black Tips
RX-401-2.5	Clear HC/PC lens, +2.5, Grey Temples/Black Tips
RX-401-3.0	Clear HC/PC lens, +3.0, Grey Temples/Black Tips
RX-401G-1.0	Grey HC/PC lens, +1.0, Grey Temples/Black Tips
RX-401G-1.5	Grey HC/PC lens, +1.5, Grey Temples/Black Tips
RX-401G-2.0	Grey HC/PC lens, +2.0, Grey Temples/Black Tips
RX-401G-2.5	Grey HC/PC lens, +2.5, Grey Temples/Black Tips
RX-401G-3.0	Grey HC/PC lens, +3.0, Grey Temples/Black Tips