



USER INSTRUCTION



Part Name: Steel Rebar Hook

Part No.: H4901

Name and address of the manufacturer:

PAT SAFETY CO., LTD.

No. 641, Zhonghua Rd., Shengang Township, Changhua County 50952, Taiwan

Tel No.: 886-4-7989280 Fax No.: 886-4-7982174

Do not throw away these instructions !

Read and understand these instructions before using equipment !



Instruction Manual

READ CAREFULLY BEFORE USE

THE EQUIPMENT

CE 0120

EC type examination carry out by SGS United Kingdom Limited, 202b,
Worle Parkway, Weston-super-Mare, BS22 6WA, United Kingdom.



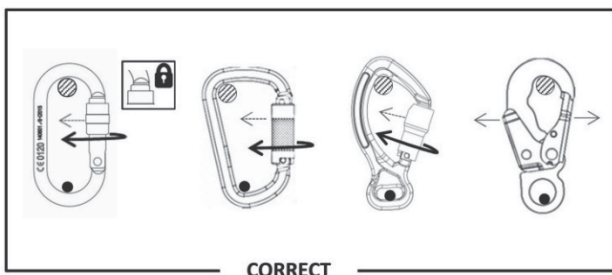
WARNING: Compliant fall protection and emergency rescue systems help prevent serious injury during fall arrest. Users must read and understand the User Instructions provided with the product and be properly trained by their employer prior to use per ANSI Z359.1 standards. Misuse or failure to follow warnings and instructions may result in serious personal injury or death.

Purpose

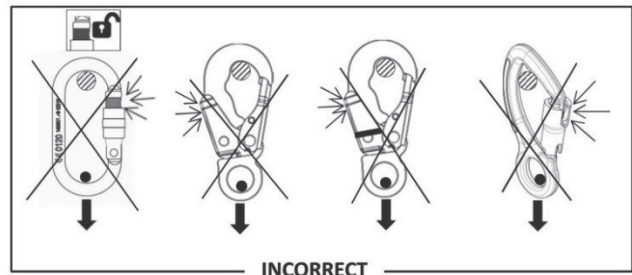
PAT Connecting Components are designed to be used as part of a personal fall arrest system.

Use Instructions

- Failure to follow all instructions and limitations on the use of Connecting Components may result in serious personal injury or death.
- Before using a personal fall arrest system, employees must be trained in accordance with the requirements of OSHA's 29 CFR 1910.66 in the safe use of the system and its components.
- Personal fall arrest systems, including Connecting Components, must be inspected prior to each use for wear, damage, and other deterioration, and defective components must be immediately removed from service, in accordance with 6.1.
- Users must have a rescue plan, and the means at hand to implement it, that provides the prompt rescue of employees in the event of a fall, or assures that employees are able to rescue themselves.
- Only use when connector gate can be fully closed and locked.
- Store Connecting Components away from environmental factors such as excessive moisture and chemicals.
- After a fall occurs, the Connecting Components must be removed from service immediately.
- Necessarily protect the snap hook gate with locking gear-see the drawings:



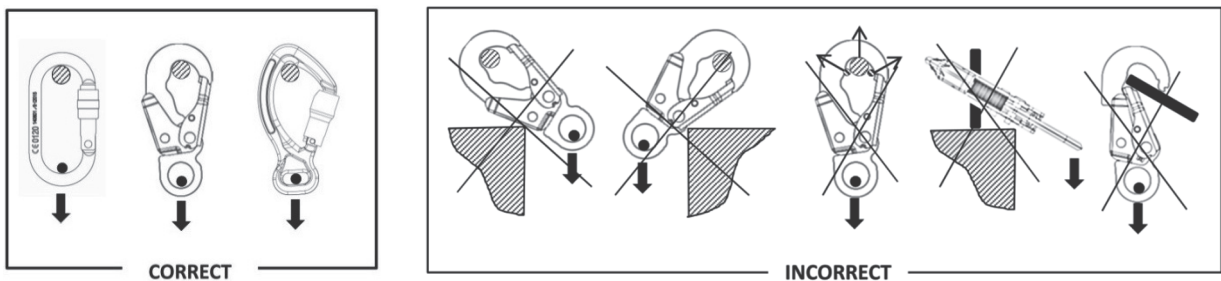
CORRECT



INCORRECT

Use Limitations

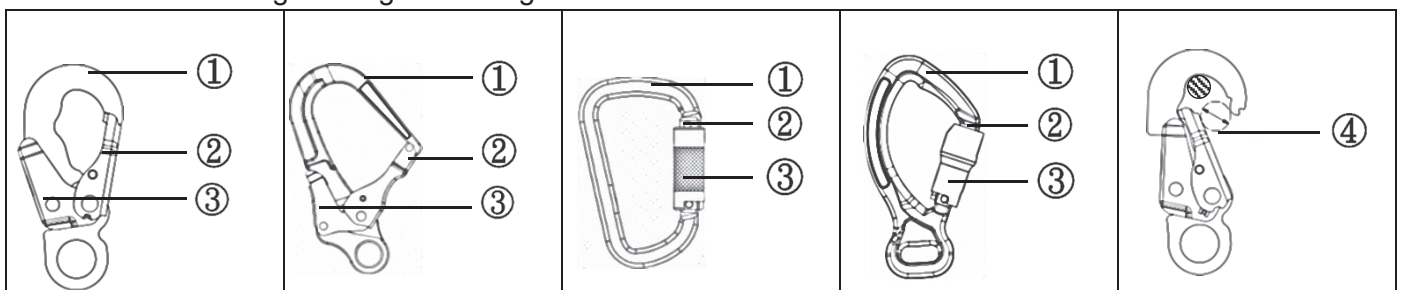
- Connecting Components must only be coupled to compatible connectors.
- Do not use when connector gate can not fully close and lock.
- Do not expose Connecting Components to chemicals or harsh solutions which may have a harmful effect.
- Caution must be taken when using Connecting Components near moving machinery, electrical hazards, sharp edges, or abrasive surfaces, as contact may cause equipment failure, personal injury, or death.
- Minors, pregnant women and anyone with a history of either back or neck problems should not use this equipment.
- Do not use or install equipment without proper training from a “competent person”
- It is forbidden to make any alterations or additions to the equipment without the manufacturer’s prior written consent.
- Any repair shall only be carried out by equipment manufacturer or his certified representative.
- **The shape of the structural anchor point should not let self-acting hooks or carabineers disconnection see the drawings:**



Snap hook						
Item No.	Material	Gate opening (mm)	Strength	Gate Rating	EN362:2004	ANSI Z359.12
PS12601	Steel	18	23kN/5000lbs	16kN/3,600lbs	T	2009
PS12602	Steel	18	23kN/5000lbs	16kN/3,600lbs	T	2009
PS12603	Steel Swivel	19	23kN/5000lbs	16kN/3,600lbs	T	2009
PS12604	Steel Swivel	19	23kN/5000lbs	16kN/3,600lbs	T	2009
SHB310	Steel	54	23kN/5000lbs	--	T	--
SHB310A	Steel	64	23kN/5000lbs	--	T	-
SHB311	Steel	18	23kN/5000lbs	--	T	-
Rebar hook						
H4901	Steel	66	23kN/5000lbs	16kN/3,600lbs	A	2009 CSA Z259.12-11
PS12605	Steel	68	23kN/5000lbs	--	A	-
Carabiner						
PS02605	Steel	17	25kN/5,600lbs	16kN/3,600lbs	B	2007
PS02606	Steel	24	25kN/5,600lbs	16kN/3,600lbs	B	2007
PS02607	Steel	25	25kN/5,600lbs	16kN/3,600lbs	B	2007
PS02608	Steel	26	23kN/5000lbs	16kN/3,600lbs	B	2007

BASIC EQUIPMENT

- ① body
- ② gate
- ③ gate locking gear
- ④ gate opening-maximum gap for the passage of an element into the snap hook and which allows the correct functioning of the gate locking feature.



Compatibility Limitations

All PAT Connectors are considered to be compatible with connecting elements when they have been designed to work together in such a way that their sizes and shapes do not cause their gate mechanisms to inadvertently open regardless of how they become oriented.

- Connectors (hooks, carabiners, and D-rings) must be capable of supporting at least 5,000 lbs. (22.2 kN).
- Connectors must be compatible with the anchorage or other system components. Do not use equipment that is not compatible. non-compatible connectors may unintentionally disengage. Connectors must be compatible in size, shape, and strength. Self locking snap hooks and carabiners are required by ANSI Z359.1 and OSHA.

Performance

PAT connectors have an automatic self-closing and self-locking feature.

PAT connectors meet the 5,000 lb tensile strength requirement when statically tested in accordance with ANSI Z359.12-2009 standard, and have been proof-tested to a minimum tensile load of 3,600 lb without cracking, breaking, or taking permanent.

Inspection

BEFORE EACH USE of this equipment, carefully inspect it to assure it is in good working condition. Check for worn or damaged parts. Inspect for sharp edges, burrs, crack, distortion, or corrosion. Gates must close and lock. Inspect other fall arrest or restraint equipment according to manufacturer's instruction. The examination must be done by a competent person. The manufacturer's inspection can be carried out by:

- Manufacturer
- Or person recommended by manufacturer.
- Or company recommended by manufacturer.

During this inspection will be established admissible time of the hooks and carabineers use till next manufacturer inspection.

The hooks and carabineers must be withdrawn from use immediately and destroyed when it have been used to arrest a fall.

Cleaning and Maintenance

Connecting Components may be wiped down to remove grease, or dirt with a clean dry cloth.

Connecting Components may require periodic lubrication. If Connecting Components are terminated to webbing, do not apply oil, grease, or other lubricants onto the webbing. Use a dry lubricant that has proper resistance to temperature extremes, moisture, and corrosion.

It is the responsibility of the user organization to provide the equipment record and to enter onto the record the details required. The record should be filled in before the first use by a competent person, responsible in the user organization for protective equipment any information about the equipment like inspections, repairs, reasons of equipment withdrawn from use shall be noted into the record by a competent person the record should be storage during a whole period of equipment utilization do not use the equipment without the record. All records in the record can be filled in only by a competent person.

EQUIPMENT RECORD	
Product	
Manufacture	PAT SAFETY CO., LTD. No.641, Zhonghua Rd., Shengang Township, Changhua County 50952, Taiwan TEL: +886 4 7989280 Fax: +886 4 7982174 Email: anita@patsafety.com.tw www.patsafety.com.tw
Owner	
User	

Serial/Lot number			
Model/Type/ID	Purchased on	First used on	Seller
Inspection must be carried out at least once a year by a competent person.			

Date	Result, Remark	✕	✓	Inspector, signature

✓ Product is OK> continue using product ✕ Product is damaged > retire product

IMPORTANT: If you have questions on the use, or suitability for use of this safety equipment, contact PAT.

CONTENT OF THE SNAP HOOK AND CARABINER MARKING

Reference number of the device: **H4901**

Manufacturer: **PAT**

Load rating for the major axis: **5,000LBS**

Load rating for gate stamped: **3,600LBS**

Marking for connectors shall be sufficient to provide
traceability: **1501**

Standard number: **ANSI Z359.1(09)**

Necessity of knowledge the —
Instruction manual before
using the device



LIMITED REMEDY: Upon notice in writing, PAT will repair or replace all defective items at PAT's sole discretion. PAT reserves the right to require that the defective item be returned to its plant for inspection before determining the appropriate course of action. Warranty does not cover equipment damage resulting from wear, abuse, damage in transit, failure to maintain the product or other damage beyond the control of PAT. PAT shall be the sole judge of product condition and warranty options. This warranty applies only to original purchaser and is the only warranty applicable to this product.